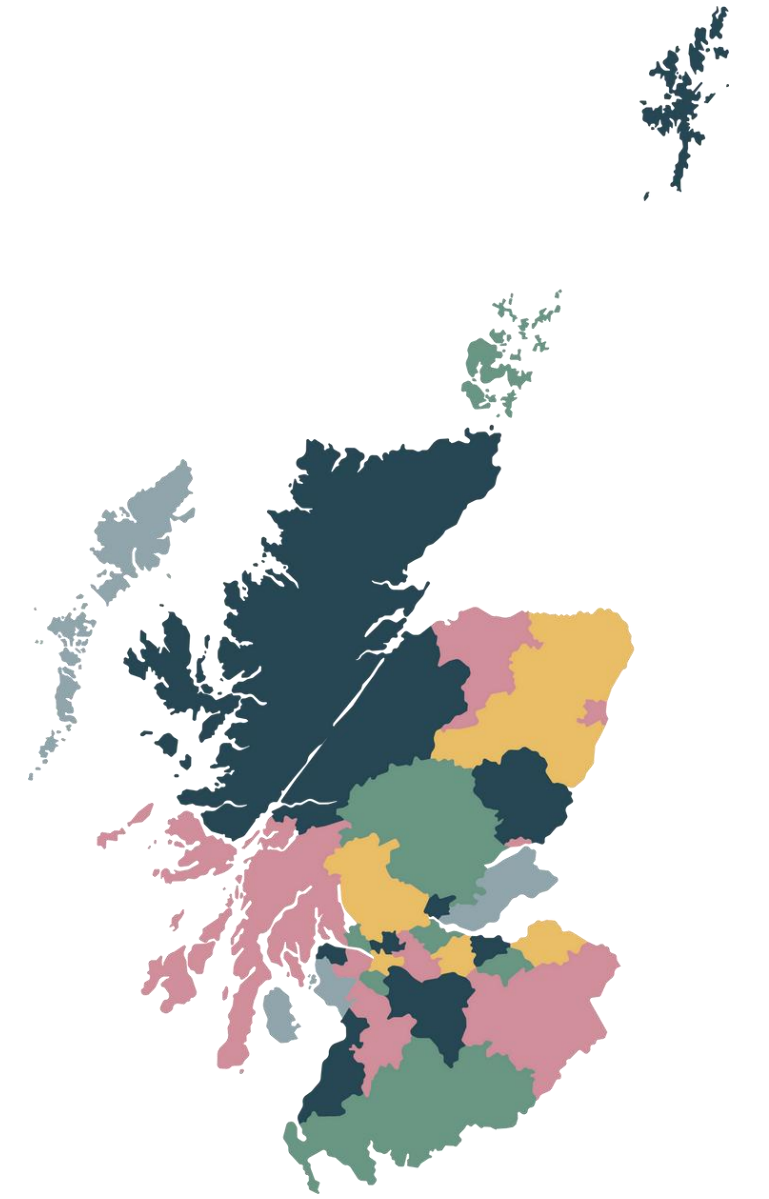


New Futures: Former Places of Worship

Delivered by the Community Ownership Support Service
At Development Trusts Association Scotland



**Community
Ownership
Support Service**

Development Trusts Association Scotland



**Development
Trusts Association
Scotland**

A Thriving Community-led Network



Welcome to today's workshop on Heritage and Contents

- Please keep yourselves on mute, to avoid background noise
- Feel free to introduce yourselves in the chat; and if possible, put your name and church building in your Zoom profile
- We're planning on recording the session, so please turn your camera off if you don't want to be recorded
- Brief introduction from me (Claire Martin, Churches Advisor, South and Central Scotland)
- Two guest speakers
- Q&A





COSS is a Scottish Government funded programme set up to:

- **Help community groups take ownership of assets for community benefit**
- **Support local authorities and other public agencies (relevant authorities) to transfer assets into community ownership**
- **Provide dedicated support to communities looking to take ownership of former places of worship (typically churches) through the New Futures: Former Places of Worship programme**
- **Deliver a Facilities Management Advisory Service**

Advisor-led support

Across all 32 Local Authority areas

Free to DTAS members and non-members



Facilities Management Support Service

- Advice and support service for all facilities and building management related enquiries
- Online resource library
- One-to-one site visit support, advice and guidance
- Operational budget planning and forecasting
- Legal Compliance advice
- Health and Safety Management support
- Monthly FM webinars
- Three training courses each year

Free support and guidance

Available to all community-led organisations

Pre- and Post-asset acquisition support



What is the New Futures: Former Places of Worship programme?

- A three-year programme funded by the National Lottery Heritage Fund, Historic Environment Scotland and Development Trusts Association Scotland (January 2025 – December 2027)
- To provide enhanced support to community groups considering taking on a former place of worship (typically a church) across Scotland
- In direct response to the significant and unprecedented number of former places of worship that are due to for disposal over the next several years
- A rolling programme of dedicated webinars and training sessions



HISTORIC
ENVIRONMENT
SCOTLAND

ÀRAINNEACHD
EACHDRAIDHEIL
ALBA



Development
Trusts Association
Scotland

A Thriving Community-led Network



New Futures: Former Places of Worship Team



**Churches Advisor -
North Scotland**

Audrey Dunn
audrey@dtascot.org.uk
07956 730149



**Churches Advisor -
South and Central Scotland**

Harry Whitmore -
harry@dtascot.org.uk
07903 060475



**Churches Advisor -
South and Central Scotland**

Claire Martin
claire.martin@dtascot.org.uk
07903 059822



Churches Programme Officer

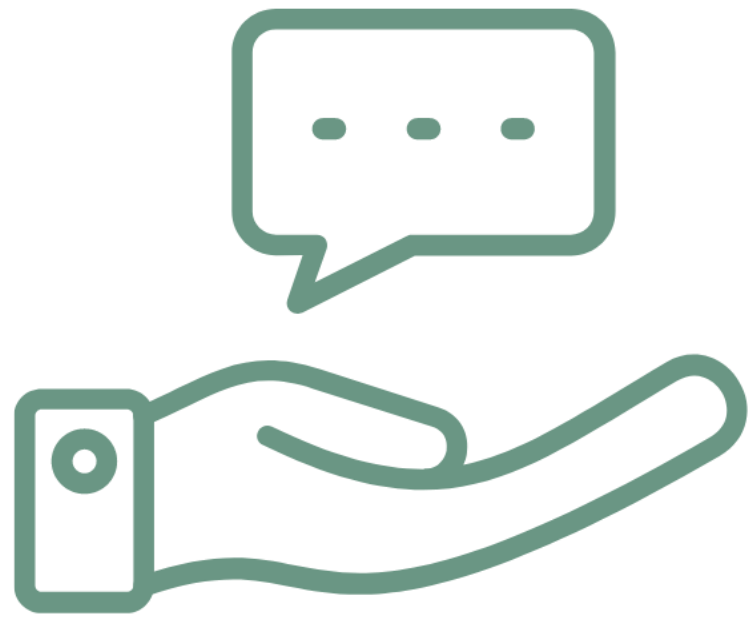
Louise Paterson
louise@dtascot.org.uk

All staff contact details are on our website: <https://dtascot.org.uk/our-team/>



New Futures: Former Places of Worship programme – Support for communities

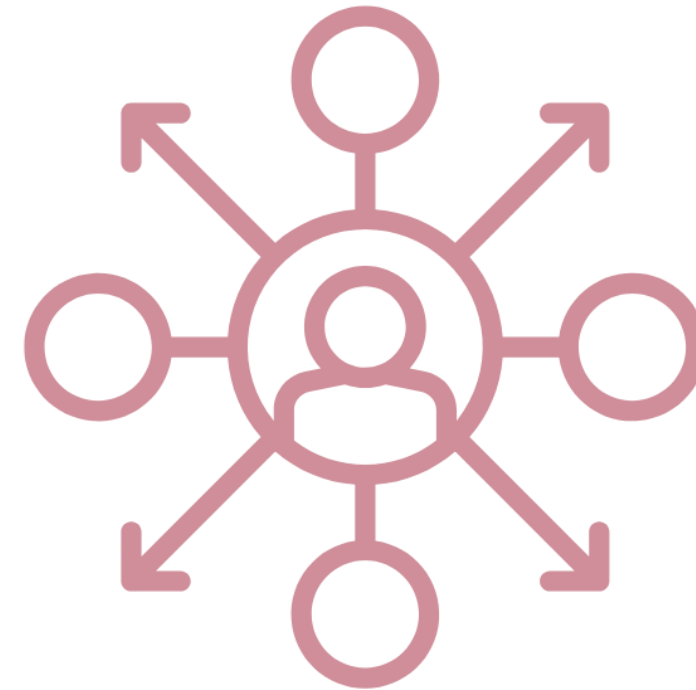
Advice & Support



Networking & Events



Representation & Influencing



Training & Resources





Summer Series / Rolling Workshop Programme

Workshop Schedule

Heritage and Contents

Guest Speakers: Research in Action on Church Heritage and Keep Scotland Beautiful

Date: Thursday 21st May - 13:00-14:30

Drop In - Fundraising

Date: Tuesday 2nd June - 12:00-13:30

Listed Building Consent

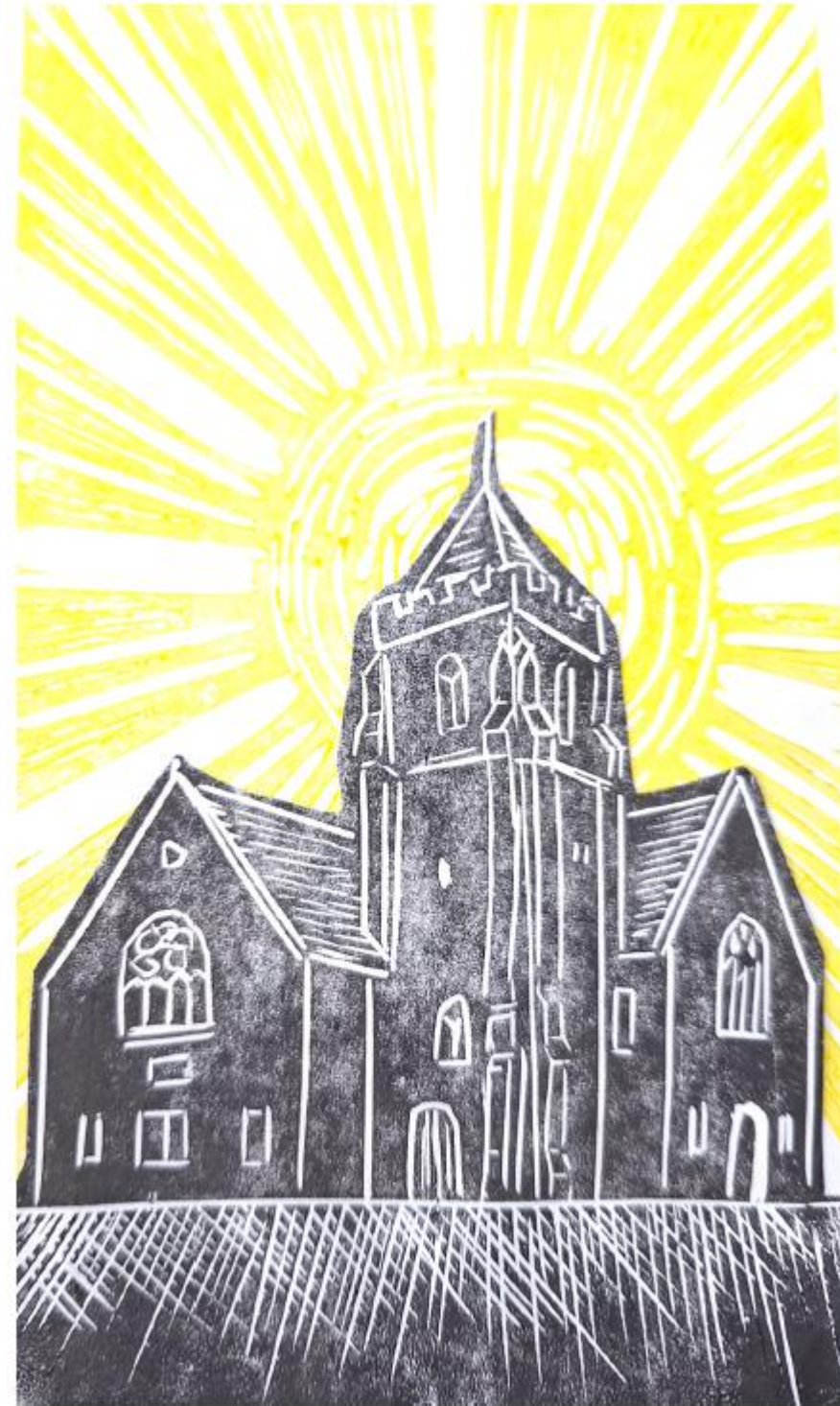
Guest Speakers: Historic Environment Scotland

Date: Tuesday 23rd June - 13:00-14:30

Drop In - Involving Your Community

Date: Thursday 2nd July - 13:00-14:30

Find more information and sign up on the [DTAS Eventbrite Page](#).



Artwork by Audrey Dunn

Rolling Workshop Programme

1. First Steps to Community Ownership
2. Involving Your Community
3. Finance and Fundraising 1: Grant Funding
4. Finance and Fundraising 2: Alternative Funding
5. Your Building: A Guide
6. Business Planning
7. Financial Planning
8. Community Right to Buy

Follow the QR code to our eventbrite page or go to our website to sign up to our rolling workshop programme.





Workshop links

[Drop In - Fundraising](#) – Tuesday 2nd June, 12:00-13:30

[Listed Building Consent](#) – Tuesday 23rd June, 13:00-14:30

[Drop In - Involving Your Community](#) – Thursday 2nd July, 13:00-14:30

[Resources](#) – Slides and recordings of previous workshops

[Eventbrite](#) – Eventbrite page, including Facilities Management workshops



Today's workshop: Heritage and Contents

Housekeeping:

- Please keep yourselves on mute, to avoid background noise
- Feel free to introduce yourselves in the chat; and if possible, put your name and church building in your Zoom profile
- Please also put any questions in the chat
- We're planning on recording the session, so please turn your camera off if you don't want to be recorded

Follow up:

- We will send the slides out by email after the event
- Feedback forms
- Get in touch! With us – and each other (via us if you'd prefer)





Today's workshop: Heritage and Contents

Presentations from two projects:

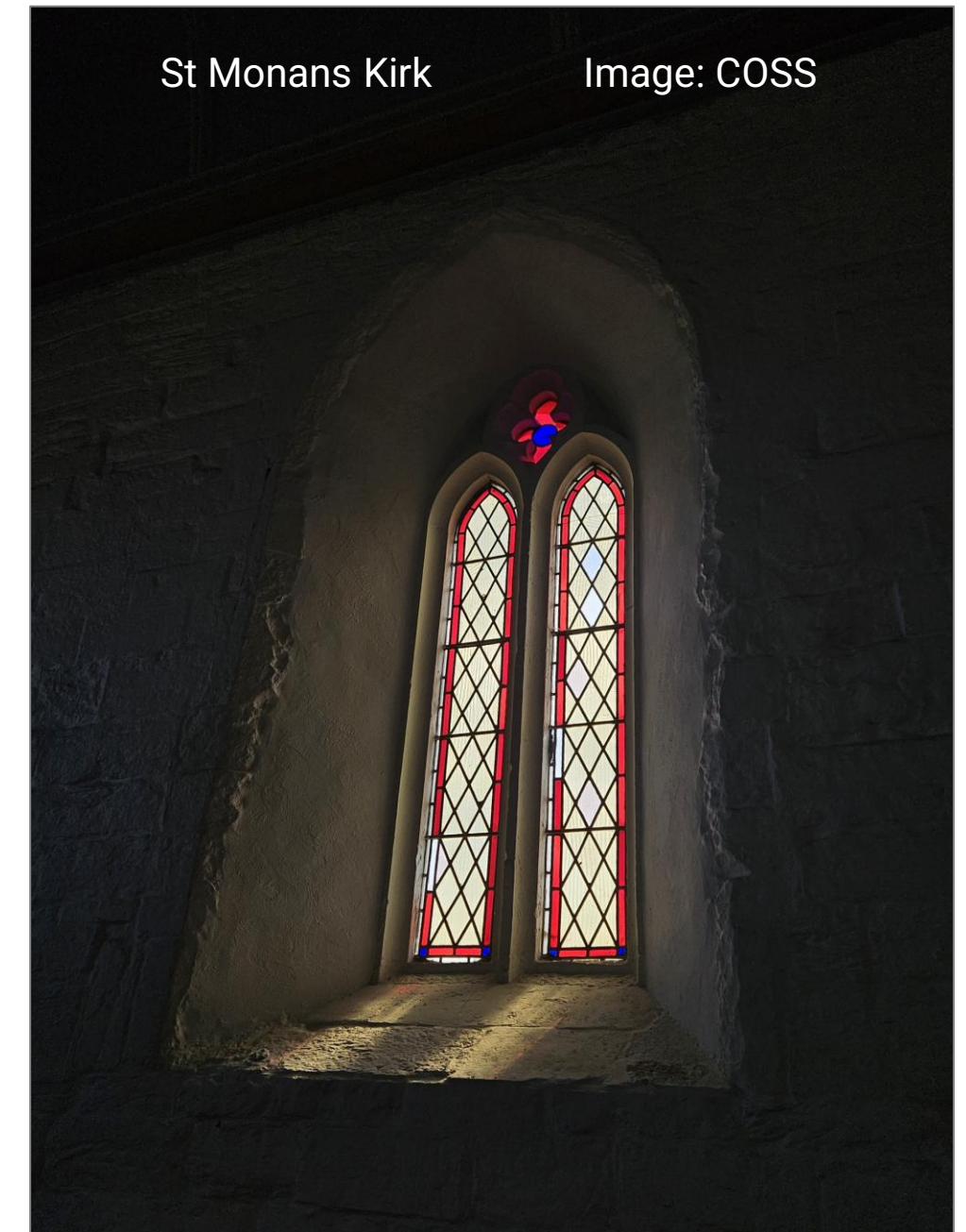
[Research in Action on Church Heritage](#)



[Our Heritage, Our Future | Keep Scotland Beautiful](#)



Q&A





Today's workshop: Heritage and Contents

Three reasons why you need to know about the contents of your church...

1. Heritage and social history recording

2. Knowing what you are taking ownership of, as part of the conveyancing process

- See the Church of Scotland's guidance here: [Disposals | The Church of Scotland](#)
- In particular, "Fittings, Fixtures and Furnishings" on p.2 of this: [Church of Scotland guidance](#)
- And "Important notes" on p.6 of this: [General Trustees off market transfer guidance](#)
- And this 1 page summary: [Closing-a-Church-Quick-Guide-January-2026.pdf](#)

3. Insurance purposes

- You might need specialist museums insurance, e.g.
- [Museum Insurance](#) (Howden)
- [Museums Insurance – Circle Insurance](#)



Stained glass, organs and pews

Useful links:

Visit Stained Glass: [Visit Stained Glass | A showcase for some of Britain's finest stained glass windows](#)

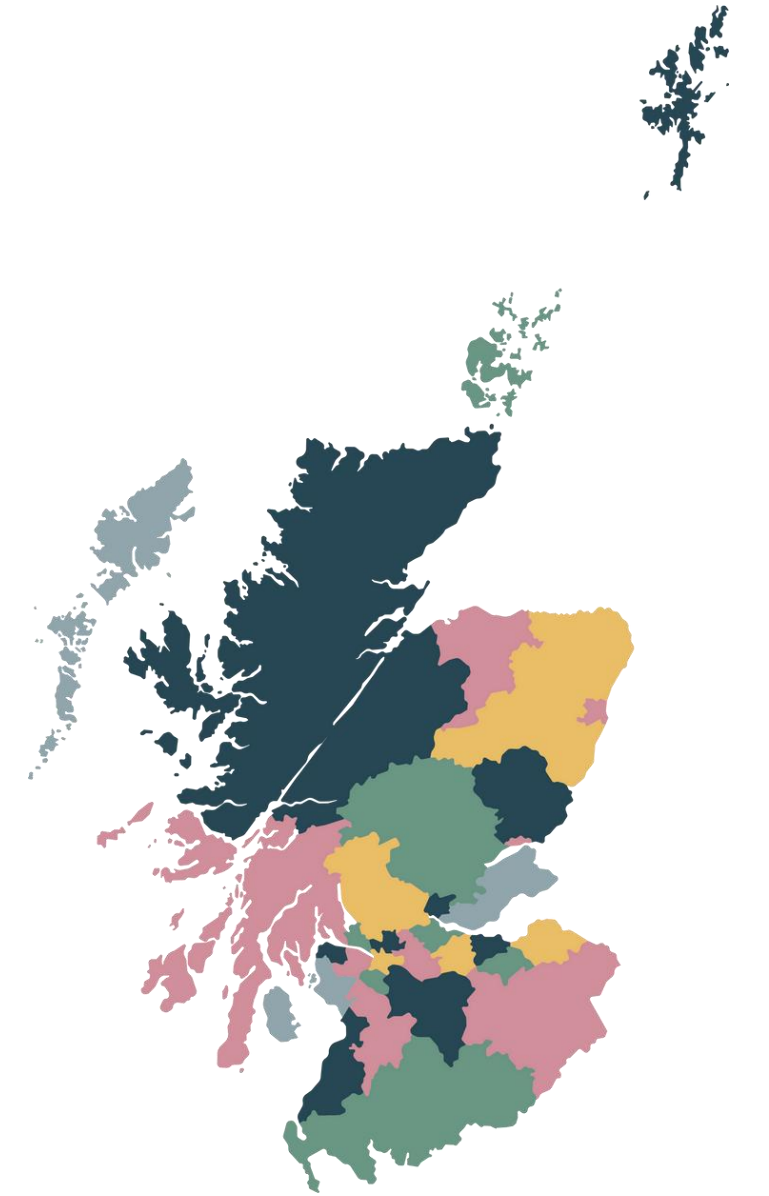
Scottish Stained Glass Trust: [Home - Scottish Stained Glass Trust](#)

Scottish Federation of Organists: [Scottish Organists | Scottish Federation Of Organists](#)

Sowne of Organe: [Home - Sowne of Organe](#)

Church of England guidance: [Sub heading](#)

Over to today's presenters...



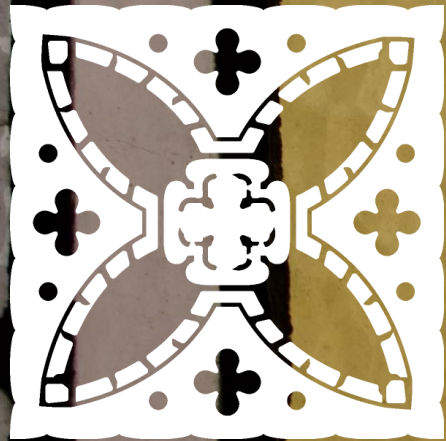
**Community
Ownership
Support Service**

Development Trusts Association Scotland



**Development
Trusts Association
Scotland**

A Thriving Community-led Network



RESEARCH IN ACTION
ON CHURCH HERITAGE

Who We Are and What We Do



A collaborative project by
the Society of Antiquaries of Scotland
& Scotland's Churches Trust



Pilgrim
Trust



RESEARCH IN ACTION ON CHURCH HERITAGE

Visit our website
churchheritage.scot





RESEARCH IN ACTION
ON CHURCH HERITAGE

What do we mean when we talk about
'heritage'?



Sometimes people think of heritage as only the biggest, fanciest, most important stuff.

But heritage includes a lot of things like...

- Buildings
- Furniture
- Memorials
- Stained glass
- Organs and other instruments
- Communion ware
- Books (e.g. bibles and hymn books)
- Visitors books
- Kneelers
- Textiles (e.g. altar cloths)
- Archives
- Photographs
- Sunday school materials
- Decorations
- Songs
- Memories
- Stories

AND LOTS MORE!



RESEARCH IN ACTION
ON CHURCH HERITAGE

Heritage is the physical stuff which tells stories about the history of a place, how it is used, and what it means to people.

Every church, no matter how small or how modern, is FULL of heritage.



RESEARCH IN ACTION
ON CHURCH HERITAGE

How we can help



RESEARCH IN ACTION
ON CHURCH HERITAGE

Fixture, Fitting, or Furnishing? Legals, Guidance and Common Issues

It is suggested that if a building is likely to be subject to vandalism the best plan initially is to try to give the impression of continuing use by regular comings and goings but once vandalism starts it may well be advisable to take immediate steps to board up points of access. Responsibility for taking all necessary steps in this regard rests upon the Kirk Session / Financial Board.

COSIS should be contacted at an early stage where a building has been categorised "B" in the plan, or is otherwise closed, to discuss options for insuring the building and the ongoing management of the building.

(b) Fittings, Fixtures and Furnishings.

Although the building itself and the heritable fittings and fixtures belong to the General Trustees, furnishings and other moveable items will be the property of the congregation which will be responsible for the disposal of them. The Church has been criticised in the past for cavalier treatment of moveable items in church buildings. It is appreciated that the clearing of a redundant building can be time consuming but it does the image of the Church no good if a building is handed over to a new owner with the interior strewn with old bibles, hymn books and abandoned ecclesiastical artefacts.

The General Trustees (CARTA) will advise on the merit of fittings, fixtures and furnishings. Detailed advice about the process can be obtained by contacting the General Trustees office by emailing gentrustees@churchofscotland.org.uk. We recommend that you should make direct contact with us as soon as possible to will carry out a detailed inventory of the building before any items are removed.

Although fittings and fixtures are treated as heritable items and strictly their disposal is a matter for the General Trustees, the Trustees will look to local parties to form a view with regard to them. Provided that it is clear that the removal of a particular item is not going to prejudice the sale of the property, or conflicts with the requirement for listed building consent, it may be possible that some items could be removed for use in another building pertaining to the congregation or to another Church of Scotland church. It should be noted that (a) the consent of the General Trustees and, depending on its regulations, the Presbytery will be required for the installation of an item in the other building and (b) if the redundant building is listed under The Planning (Listed Buildings and Conservation Areas) (Scotland) Act 1997, Listed Building Consent may well be required for their removal.

Memorials to individuals and War Memorials call for particular consideration. In the case of listed buildings, the legal position is that if a memorial is built into/fixated to the structure it will be deemed to be part of the building and be the property of the General Trustees. Unless there is some specialty, the legal position will be that if a memorial is built into the structure, it will be deemed to be part of the building and be the property of the General Trustees. If the family of an individual to which there is a memorial can be traced it is good practice to contact them to ascertain whether they have any interest in the item in question. Items such as War Memorials should normally be removed, particularly if the building is likely to be used for secular purposes or demolished. In some cases, it may be appropriate to install such items in another Church of Scotland building. We will be happy to advise. The possible need to obtain Listed Building Consent should be borne in mind with regard to the removal of memorials. Items which have been gifted to the congregation should also be dealt with sensitively and not simply alienated or discarded without consultation with the donor or a relative if they can be traced.

(c) Mechanics of Sale

The exact procedure followed by the General Trustees in effecting a sale will inevitably vary from case to case but the following outline of the main points may be helpful.

- **Title:** The title will be examined at an early stage. Titles to former *Quoad Omnia* buildings tend to be straightforward but in the case of former *Quoad Sacra*, United Free and Church Extension properties there will frequently be title restrictions which will have to be evacuated before the General Trustees are in a position to give a clean title. The Trustees are flexible on the point but it is their normal practice not to put a property on the market until they have resolved any title difficulties. This may mean protracted negotiations with the Superior or

Church of Scotland Disposal Procedures and Listed Building Requirements – the Headlines

- The building, fixtures, and fittings belong to the General Trustees. They are often sold with the building.
- Furnishings and movable items belong to the congregation (communion ware which requires GT oversight).
- CoS encourage a church to be cleared before sale.
- Check the ownership of all items you might expect to be included with the sale of the building.
- If your church is listed, then you will need consent to change any parts of the building, fixtures or fittings.
- What exactly counts as a fixture/fitting or a furnishing or movable item isn't an exact science. Contact your LA.



Historic Environment
Scotland Guidance

Fixtures/Fittings

Furnishings/Movable Items

Burials





RESEARCH IN ACTION
ON CHURCH HERITAGE

Heritage Recording and Inventories



CHURCH RECORDERS' HANDBOOK

Created by Scotland's Churches Trust, as part of an Historic Environment Scotland supported pilot project, to assist future volunteers with recording the contents of Scotland's closing church buildings.



RESEARCH IN ACTION
ON CHURCH HERITAGE



Scotland's Churches Trust's
'Church Recorders' Handbook'
can be downloaded by scanning this QR code





RESEARCH IN ACTION
ON CHURCH HERITAGE

Celebrating Heritage

trove.scot

Home > Places > Glasgow, Glasgow Cathedral, 70 Cathedral Square, Cathedral C

< [Back to previous page](#)

Glasgow, Glasgow Cathedral, 70 Cathedral Square, Cathedral Of St Mungo

Classifications: [War Memorials](#) (Plural), [Human Remains](#) (Century)

Status: Property in Care

This place may be a listed monument or other designations. See [records](#)

Also known as

Barony Kirk; Glasgow Cathedral; High Church; Metropolitan Kirk; St Mungo's; War Memorials & Rolls Of Honour

[Overview](#) [Images](#) [Details](#) [Related archives](#) [Related](#)



Research and Interpretation



RESEARCH IN ACTION
ON CHURCH HERITAGE



Community Engagement



RESEARCH IN ACTION
ON CHURCH HERITAGE

What you can do to help us



RESEARCH IN ACTION
ON CHURCH HERITAGE

We are building a national record of churches in transition to new uses

Please share your inventories – ones from CoS, in sales agreements,
or surveys you have done yourself.

Share any images you have of your church.

Tell us about your plans, we always want to support communities
taking on their churches!



RESEARCH ^{IN} ACTION
ON CHURCH HERITAGE

Thank you! Any questions?

churches@socantscot.org

Keep Scotland Beautiful

Lisa Snedden

Our Heritage, Our Future Coordinator

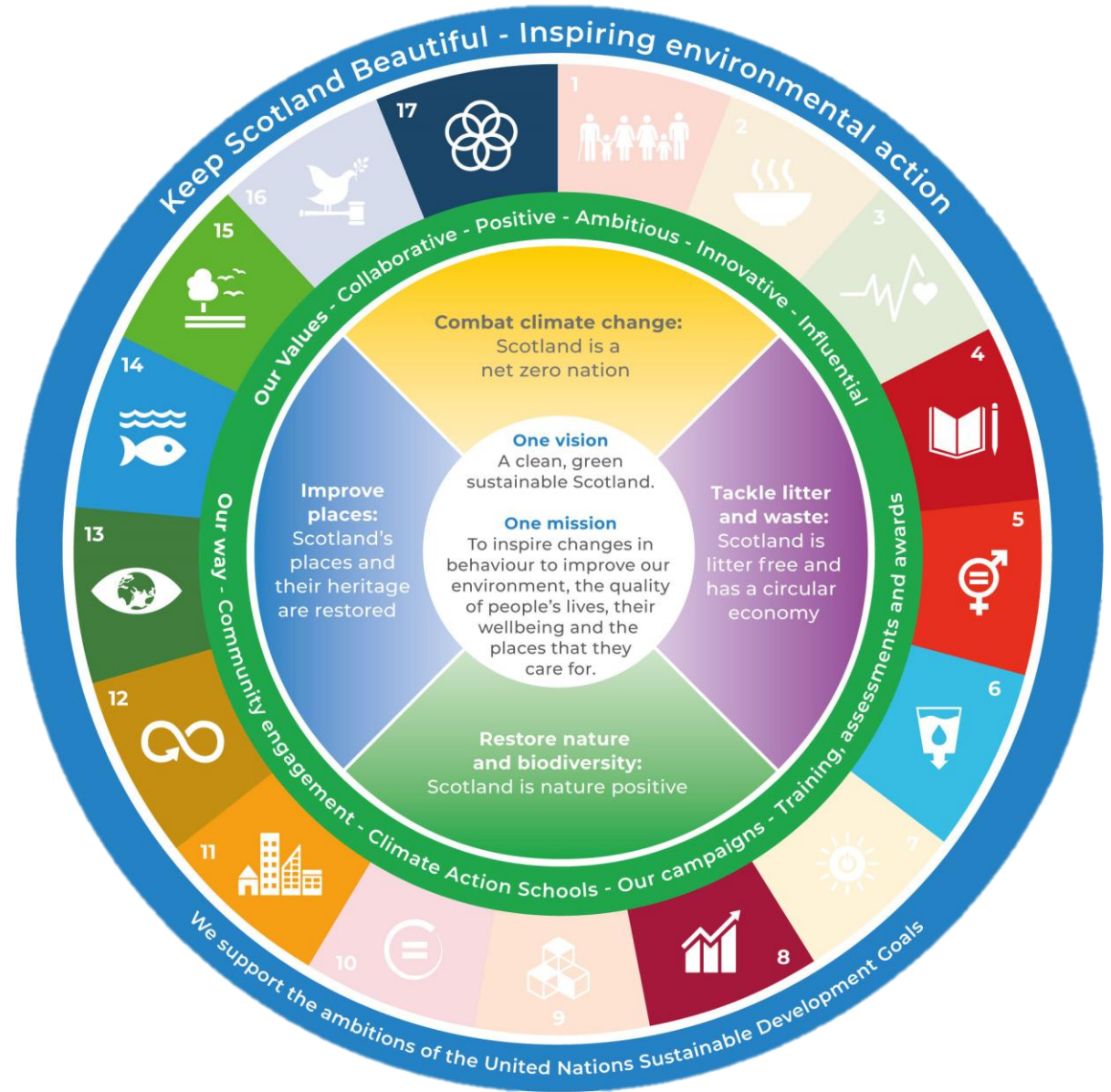


Keep Scotland Beautiful

Keep Scotland Beautiful is your charity for Scotland's environment.

We work with you to help combat climate change, reduce litter and waste and protect and enhance the places we care for.

We support the ambitions of the United Nations Sustainable Development Goals.





Improve places



Issue:

The quality of our places and spaces is declining.



Ambition:

Scotland's places and their heritage are restored.



Opportunity:

Help us improve our local communities.



Our Heritage, Our Future

Scotland's places and our engagement with their heritage are improved.

Our natural, built & intangible heritage is under threat. We support communities to recognise the value of their places and heritage and take action to protect it.



Our Heritage, Our Future?

- Heritage and climate skills
- Heritage and climate actions in schools
- Heritage and climate action in communities



<https://www.KeepScotlandBeautiful.org/our-heritage-our-future/>



HISTORIC
ENVIRONMENT
SCOTLAND

ÀRAINNEACHD
EACHDRAIDHEIL
ALBA

Community Heritage Climate Action Plans

Series of community
engagement sessions to gather
data to inform the plan

What is heritage? What is important to the people
that live here?

Place Standard Tool with Your Historic Place Lens

Wee Wander visioning exercise

Impacts of Climate Change on Heritage
Conversations

Action Card sort and Action Planning



Co-production Principles

Equality everyone who takes part has equal importance

Diversity no one is excluded

Access make sure everyone can take part

Reciprocity everyone should get something from participating

[Adapted from 'A Meeting of Minds: How Co-production benefits people, professionals and organisations' Jo Woodall et al. 2019](#)



St Peter in Chains, Ardrossan

Creating a Community Heritage and Climate Action Plan

Extensive community engagement activities to support a major funding application to carry out essential repairs to the A listed building.

We used our bespoke methodology to engage over 200 people from the community and local schools.

Funding was award from the National Lottery Heritage Fund for over £190,000.



St Fillans

Heritage Action Plan

Heritage was outlined as an area of priority in the St Fillans local place plan.

We worked with the local development trust to consult with the wider community to establish what heritage they valued.

From here we facilitated sessions to help the trust set up a heritage group, prioritise actions, trained them in delivering guided tours, and supported them to raise funds for a purpose-built store to house their community archive.



Certificate in Cultural Heritage Units

- Caring for heritage
- Creating exhibitions and displays
- Creating and conducting guided tours
- Exploring identity, diversity and representation
- Impacts of climate change on heritage
- Preparing for heritage volunteering
- Recording the heritage environment
- Sharing heritage stories



Sharing Heritage Stories

Learners will:

- research heritage themes using a wide range of resources
- share this in an appropriate format for their intended audience, such as interpretation panels, leaflets or blog posts
- ensure that the format is accessible
- understand importance of seeking feedback from their audience.



Caring for Heritage

Learners will:

- assess the condition of a heritage place or object
- plan maintenance tasks ethically, safely and within their abilities
- obtain relevant permissions
- carry out the work
- suggest future maintenance regimes



Creating Exhibitions and Displays

Learners will:

- plan and create displays for cultural heritage setting
- gain practical skills to design, prepare and install displays safely
- ensure displays are accessible
- understand the importance of feedback



Creating and Conducting Guided Tours

Learner will:

- carry out historical research using a wide range of resources
- plan and risk assess a route
- create engaging content and visual aids
- carry out a short guided walk
- gather feedback from participants
- reflect on their performance



Exploring Identity, Diversity and Representation

Learners will:

- gain an understanding about diversity and inclusion and key related terms
- explore the links between heritage and individual and national identity
- understand how museums have evolved over time
- create a small exhibition exploring these themes



Impacts of Climate Change on Heritage

Learners will:

- be introduced to terminology related to climate change
- explore the key drivers of climate change
- Understand how our heritage environment is being impacted by climate change and what can be done to mitigate and adapt to climate change



Preparing for Heritage Volunteering

Learners will:

- explore the typical roles and responsibilities in heritage volunteering
- learn about the heritage sector
- participate in a volunteering activity at a local heritage place



Recording the Heritage Environment

Learners will:

- use a range of techniques to record the heritage environment
- understand the importance in recording heritage
- research natural, built and cultural heritage
- Gain an understanding of the importance of record keeping and archiving



Thank you

Contact Lisa Snedden

T: 01786 471333

E: lisa.snedden@KeepScotlandBeautiful.org

 @KSBScotland

 @KSBScotland

 @KSBScotland